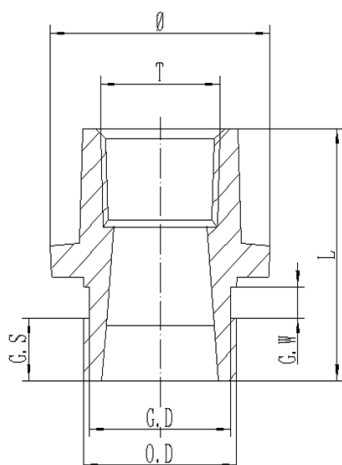


THREADED CONCENTRIC REDUCER GRCD



page 1 of 3



Threaded concentric reducers provide an economical and efficient method of reducing grooved to threaded piping systems.

Reference		Nominal size		Pipe Ø O.D.	Threaded concentric reducer dimensions						Weight	Marking
Red	Galva	NPS inch	DN mm	mm	L mm	GD	GS	GW	T/Rc	Ø	kg	
GRCDR	GRCDG	2 x 1	50	60,3	64	57,2	15,88	7,93	1	-	0,40	GRCD
GRCDR	GRCDG	2 x 1¼	50	60,3	64	57,2	15,88	7,93	1¼	72	0,50	GRCD
GRCDR	GRCDG	2 x 1½	50	60,3	64	57,2	15,88	7,93	1½	78	0,56	GRCD
GRCDR	GRCDG	2½ x 1	65	73,0	64	69,1	15,88	7,93	1	-	0,53	GRCD
GRCDR	GRCDG	2½ x 1¼	65	73,0	64	69,1	15,88	7,93	1¼	-	0,60	GRCD
GRCDR	GRCDG	2½ x 1½	65	73,0	64	69,1	15,88	7,93	1½	-	0,59	GRCD
GRCDR	GRCDG	2½ x 2	65	73,0	64	69,1	15,88	7,93	2	90	0,65	GRCD
GRCDR	GRCDG	2½ x 1	65	76,1	64	72,3	15,88	7,93	1	90	0,49	GRCD
GRCDR	GRCDG	2½ x 1¼	65	76,1	64	72,3	15,88	7,93	1¼	90	0,55	GRCD
GRCDR	GRCDG	2½ x 1½	65	76,1	64	72,3	15,88	7,93	1½	92	0,57	GRCD
GRCDR	GRCDG	2½ x 2	65	76,1	64	72,3	15,88	7,93	2	92	0,70	GRCD
GRCDR	GRCDG	3 x 1	80	88,9	64	84,9	15,88	7,93	1	-	0,65	GRCD
GRCDR	GRCDG	3 x 1¼	80	88,9	64	84,9	15,88	7,93	1¼	-	0,60	GRCD
GRCDR	GRCDG	3 x 1½	80	88,9	64	84,9	15,88	7,93	1½	-	0,65	GRCD
GRCDR	GRCDG	3 x 2	80	88,9	64	84,9	15,88	7,93	2	-	0,74	GRCD
GRCDR	GRCDG	3 x 2½	80	88,9	64	84,9	15,88	7,93	2½	108	0,76*	GRCD
GRCDR	GRCDG	4 x 1	100	108,0	76	103,7	15,88	9,53	1	-	0,98**	GRCD
GRCDR	GRCDG	4 x 1¼	100	108,0	76	103,7	15,88	9,53	1¼	-	1,06**	GRCD
GRCDR	GRCDG	4 x 1½	100	108,0	76	103,7	15,88	9,53	1½	-	0,84**	GRCD
GRCDR	GRCDG	4 x 2	100	108,0	76	103,7	15,88	9,53	2	-	1,01**	GRCD
GRCDR	GRCDG	4 x 2½	100	108,0	76	103,7	15,88	9,53	2½	-	1,02***	GRCD
GRCDR	GRCDG	4 x 3	100	108,0	76	103,7	15,88	9,53	3	138,5	1,05***	GRCD
GRCDR	GRCDG	4 x 1	100	114,3	76	110,1	15,88	9,53	1	-	0,90	GRCD
GRCDR	GRCDG	4 x 1¼	100	114,3	76	110,1	15,88	9,53	1¼	-	0,90	GRCD
GRCDR	GRCDG	4 x 1½	100	114,3	76	110,1	15,88	9,53	1½	-	0,90	GRCD
GRCDR	GRCDG	4 x 2	100	114,3	76	110,1	15,88	9,53	2	-	1,00	GRCD
GRCDR	GRCDG	4 x 2½	100	114,3	76	110,1	15,88	9,53	2½	-	1,26	GRCD
GRCDR	GRCDG	4 x 3	100	114,3	76	110,1	15,88	9,53	3	-	1,10*	GRCD
GRCDR	GRCDG	5 x 1	125	133,0	85	129,1	15,88	9,53	1	-	1,42**	GRCD

THREADED CONCENTRIC REDUCER

GRCD



Reference		Nominal size		Pipe Ø O.D.	Threaded concentric reducer dimensions						Weight	Marking
Red	Galva	NPS inch	DN mm	mm	L mm	GD	GS	GW	T/Rc	Ø	kg	
GRCDR	GRCDG	5 x 1¼	125	133,0	85	129,1	15,88	9,53	1¼	-	1,44**	GRCD
GRCDR	GRCDG	5 x 1½	125	133,0	85	129,1	15,88	9,53	1½	-	1,45**	GRCD
GRCDR	GRCDG	5 x 2	125	133,0	85	129,1	15,88	9,53	2	-	1,45**	GRCD
GRCDR	GRCDG	5 x 2½	125	133,0	85	129,1	15,88	9,53	2½	-	1,66***	GRCD
GRCDR	GRCDG	5 x 3	125	133,0	85	129,1	15,88	9,53	3	149	1,82***	GRCD
GRCDR	GRCDG	5 x 1	125	139,7	85	135,5	15,88	9,53	1	-	1,45	GRCD
GRCDR	GRCDG	5 x 1¼	125	139,7	85	135,5	15,88	9,53	1¼	-	1,50	GRCD
GRCDR	GRCDG	5 x 1½	125	139,7	85	135,5	15,88	9,53	1½	-	1,63	GRCD
GRCDR	GRCDG	5 x 2	125	139,7	85	135,5	15,88	9,53	2	-	1,75	GRCD
GRCDR	GRCDG	5 x 2½	125	139,7	85	135,5	15,88	9,53	2½	-	1,95	GRCD
GRCDR	GRCDG	5 x 3	125	139,7	85	135,5	15,88	9,53	3	-	2,12*	GRCD
GRCDR	GRCDG	5 x 4	125	139,7	85	135,5	15,88	9,53	4	168	2,25*	GRCD
GRCDR	GRCDG	5 x 1	125	141,3	85	137,0	15,88	9,53	1	-	-	GRCD
GRCDR	GRCDG	5 x 1¼	125	141,3	85	137,0	15,88	9,53	1¼	-	-	GRCD
GRCDR	GRCDG	5 x 1½	125	141,3	85	137,0	15,88	9,53	1½	-	-	GRCD
GRCDR	GRCDG	5 x 2	125	141,3	85	137,0	15,88	9,53	2	-	1,75	GRCD
GRCDR	GRCDG	5 x 2½	125	141,3	85	137,0	15,88	9,53	2½	-	-	GRCD
GRCDR	GRCDG	5 x 3	125	141,3	85	137,0	15,88	9,53	3	-	- *	GRCD
GRCDR	GRCDG	5 x 4	125	141,3	85	137,0	15,88	9,53	4	-	- *	GRCD
GRCDR	GRCDG	6 x 1	150	159,0	85	154,5	15,88	9,53	1	-	1,75**	GRCD
GRCDR	GRCDG	6 x 1¼	150	159,0	85	154,5	15,88	9,53	1¼	-	1,75**	GRCD
GRCDR	GRCDG	6 x 1½	150	159,0	85	154,5	15,88	9,53	1½	-	1,75**	GRCD
GRCDR	GRCDG	6 x 2	150	159,0	85	154,5	15,88	9,53	2	-	1,80**	GRCD
GRCDR	GRCDG	6 x 2½	150	159,0	85	154,5	15,88	9,53	2½	-	2,00**	GRCD
GRCDR	GRCDG	6 x 3	150	159,0	85	154,5	15,88	9,53	3	-	2,31**	GRCD
GRCDR	GRCDG	6 x 4	150	159,0	85	154,5	15,88	9,53	4	-	2,50***	GRCD
GRCDR	GRCDG	6 x 1	150	165,1	85	160,9	15,88	9,53	1	-	1,85	GRCD
GRCDR	GRCDG	6 x 1¼	150	165,1	85	160,9	15,88	9,53	1¼	-	1,90	GRCD
GRCDR	GRCDG	6 x 1½	150	165,1	85	160,9	15,88	9,53	1½	-	1,90	GRCD
GRCDR	GRCDG	6 x 2	150	165,1	85	160,9	15,88	9,53	2	-	2,05	GRCD
GRCDR	GRCDG	6 x 2½	150	165,1	85	160,9	15,88	9,53	2½	-	2,05	GRCD
GRCDR	GRCDG	6 x 3	150	165,1	85	160,9	15,88	9,53	3	-	2,00	GRCD
GRCDR	GRCDG	6 x 4	150	165,1	85	160,9	15,88	9,53	4	-	2,20*	GRCD
GRCDR	GRCDG	6 x 1	150	168,3	85	164	15,88	9,53	1	-	1,85	GRCD
GRCDR	GRCDG	6 x 1¼	150	168,3	85	164	15,88	9,53	1¼	-	1,90	GRCD
GRCDR	GRCDG	6 x 1½	150	168,3	85	164	15,88	9,53	1½	-	1,90	GRCD
GRCDR	GRCDG	6 x 2	150	168,3	85	164	15,88	9,53	2	-	2,05	GRCD
GRCDR	GRCDG	6 x 2½	150	168,3	85	164	15,88	9,53	2½	-	2,00	GRCD
GRCDR	GRCDG	6 x 3	150	168,3	85	164	15,88	9,53	3	-	2,10*	GRCD
GRCDR	GRCDG	6 x 4	150	168,3	85	164	15,88	9,53	4	-	2,20*	GRCD
GRCDR	GRCDG	8 x 1	200	219,1	85	214,4	19,05	11,1	1	-	3,18*	GRCD
GRCDR	GRCDG	8 x 1¼	200	219,1	85	214,4	19,05	11,1	1¼	-	3,15*	GRCD
GRCDR	GRCDG	8 x 1½	200	219,1	85	214,4	19,05	11,1	1½	-	3,15*	GRCD
GRCDR	GRCDG	8 x 2	200	219,1	85	214,4	19,05	11,1	2	-	3,26	GRCD
GRCDR	GRCDG	8 x 2½	200	219,1	85	214,4	19,05	11,1	2½	-	3,50	GRCD

THREADED CONCENTRIC REDUCER GRCD



Reference		Nominal size		Pipe Ø O.D.	Threaded concentric reducer dimensions						Weight	Marking
Red	Galva	NPS inch	DN mm	mm	L mm	GD	GS	GW	T/Rc	Ø	kg	
GRCDR	GRCDG	8 x 3	200	219,1	85	214,4	19,05	11,1	3	-	3,35	GRCD
GRCDR	GRCDG	8 x 4	200	219,1	85	214,4	19,05	11,1	4	-	3,40*	GRCD

Material specifications

Housing: ductile iron conform to ASTM A536 GR 65-45-12

Coating:

- Hot dip galvanised
- Red paint coating RAL 3000, EPD Epoxy coating

Working pressure

300 psi/2068 kPa/20,7 barg

THREADED PART STANDARD BSPT-THREAD
AVAILABLE WITH NPT-THREAD

General notes:

- * No FM-approval / ** No UL-approval / *** No FM- and UL-approval
- Pressure ratings listed are CWP (cold working pressure) or MWP (maximum working pressure) at a maximum service temperature of 50°C. This rating may occasionally differ from maximum working pressure listed and/or approved by UL and/or FM, as testing conditions and test pipes can differ. For more information, please contact info@pipinglogistics.eu.
- Maximum working pressure listed is total of internal and external pressures based on standard weight (ANSI) steel pipe and standard roll or cut groove in accordance with Profit specifications. For more information, please contact info@pipinglogistics.eu.
- For one time field test only, the maximum joint working pressure may be increased by 150% the figure shown.
- Warning: Piping systems must always be depressurised and drained before attempting disassembly and/or removal of any components.
- Piping Logistics reserves the right to change specifications, designs and/or standard equipment without notice and without incurring in any obligations.
- Profit red coated products are intended for piping with indoor application (EN 12944-2 corrosivity category C1 & C2). For outdoor installations near the sea (corrosivity category C3).
- We advise the use of our hot dip galvanised couplings and fittings. For application in corrosivity category C4 (higher salinity climate) or higher, please contact info@pipinglogistics.eu.
- We strongly advise to always store our products in closed and dry environments.